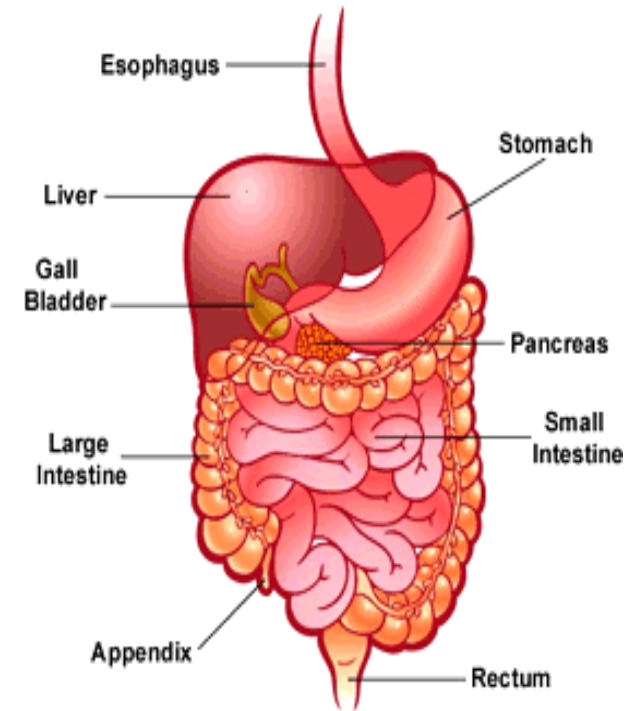
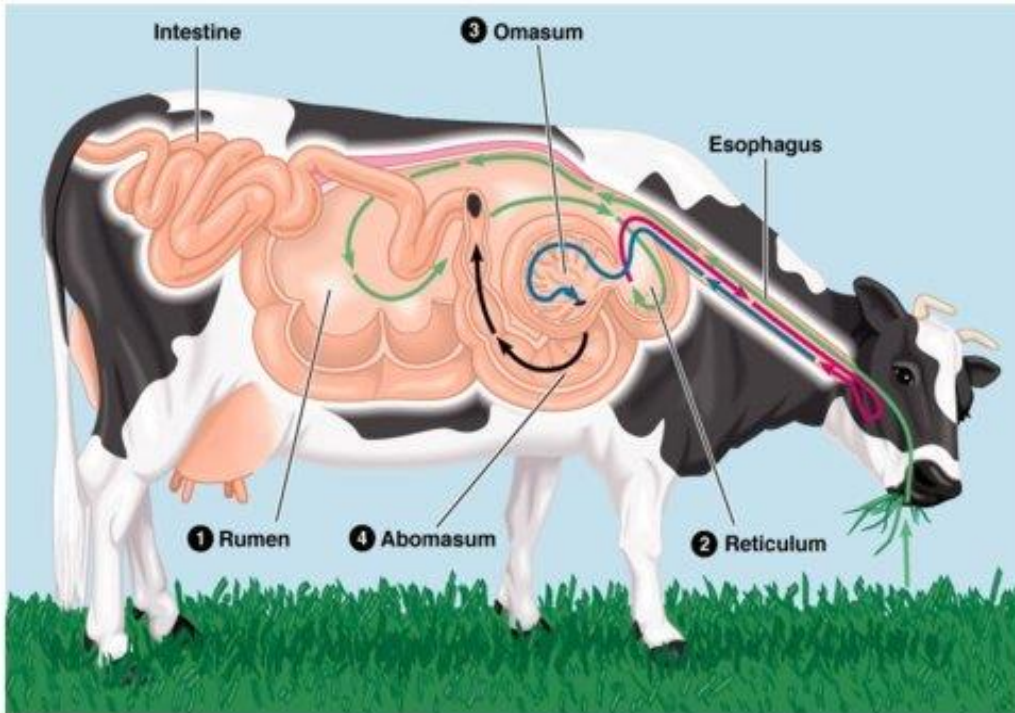


AF 1201

Digestive System

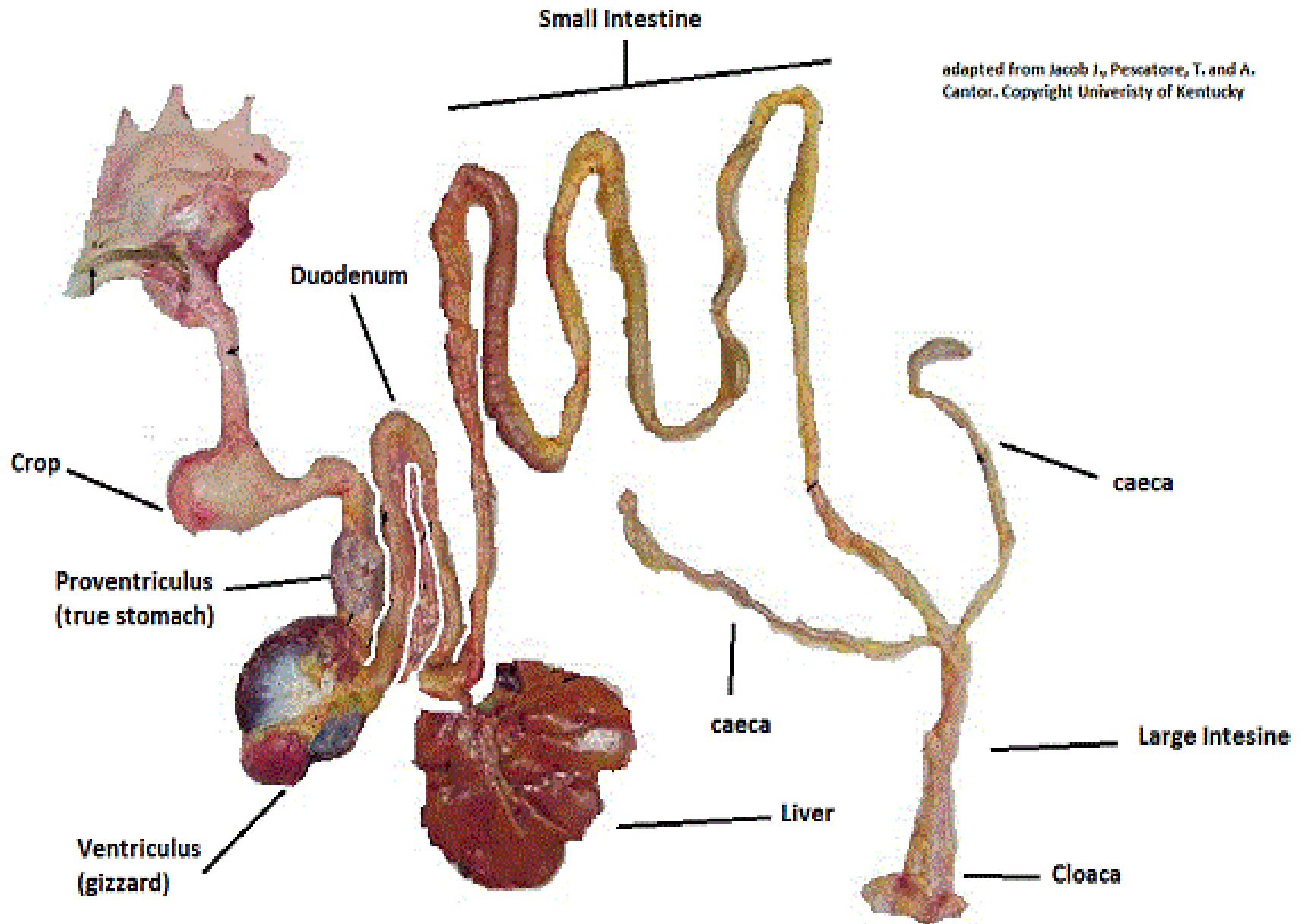


Dr. A.M.J.B. Adikari
Dept. of Animal and Food Sciences

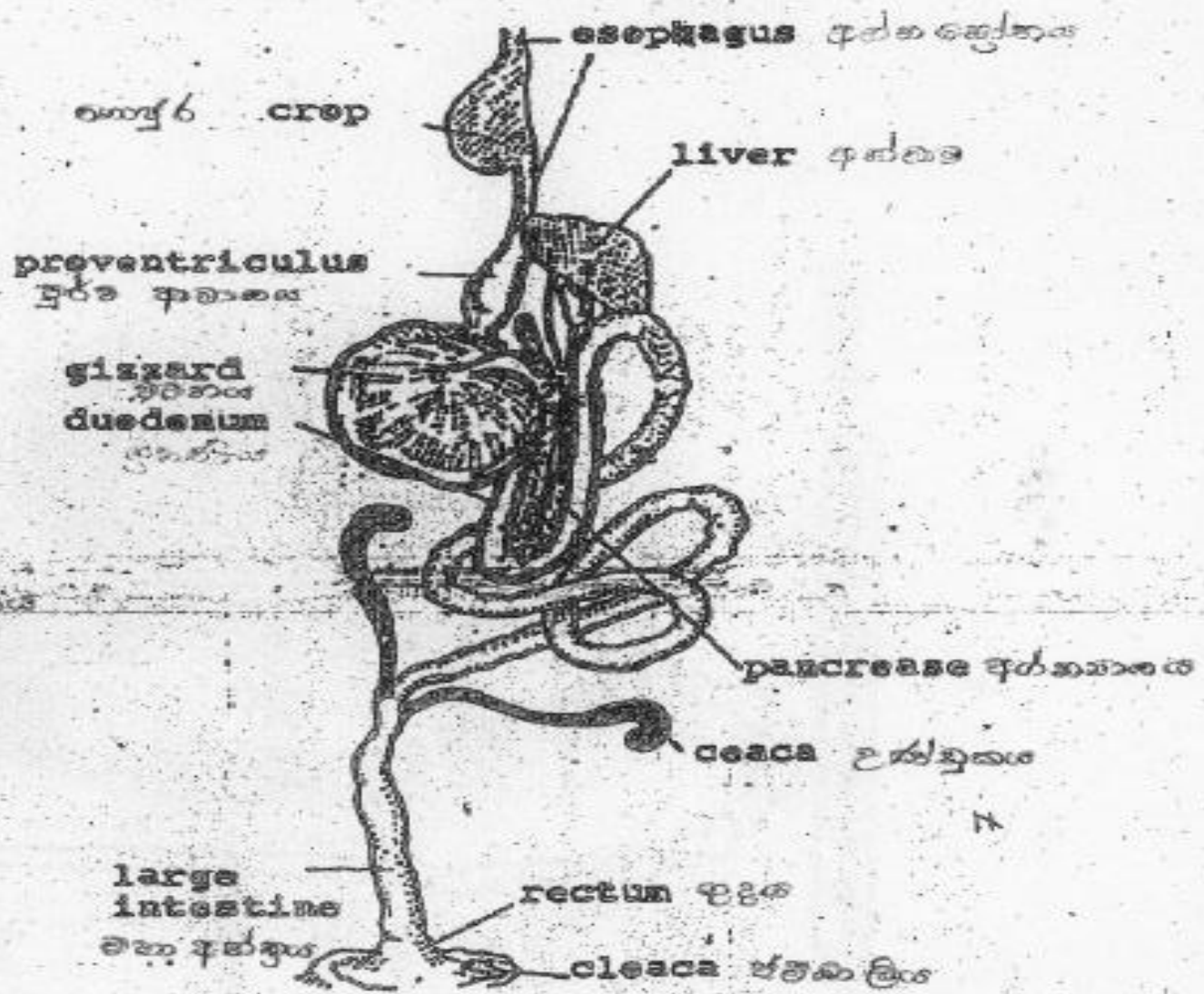
Poultry Digestive Tract

- Simple, short, acidic in nature
- Parts
 - Mouth
 - Oral cavity
 - Esophagus
 - Crop
 - Ventriculus
 - Pro ventriculus
 - Small intestine
 - Large intestine
 - Caecum
 - Colaca

adapted from Jacob J. Pesatore, T. and A. Cantor. Copyright University of Kentucky



Digestive system of poultry



- **Mouth**

- No lips, cheeks, no teeth
- Has a beak
- Pick up food (Prehensive organ)

- **Oral cavity**

- Tongue - triangular structure, inflexible, few taste buds, facilitate swallowing
- Salivary glands - secrete acidic mucous

- **Oesophagus**
 - Structure similar to mammals
 - Secrete mucous

- **Crop**
 - Distal end of oesophagus is enlarged
 - Storage organ
 - Thin wall, non glandular
 - Glands are present in some spp – **pigeon**

- **Pro ventriculus**

- 1st part of the stomach
- Glandular, produce gastric juice

- **Ventriculus (Gizzard)**

- 2nd part of the stomach
- Muscular, no glands, inside is rough
- Mechanical and chemical digestion
- Terminal end - pyloric sphincter

- **Small intestine**

- 3 part

- U shaped duodenum – distinct

- Jejunum – not distinct

- Ileum – not distinct

- Comparatively short

- Digestion & absorption incomplete

- **Caecum**

- Extensively developed

- Microbial digestion

- Ileo - caeco – colic junction

- Valves - prevent entering large particles

- **Large intestine**

- Colon & rectum - short
- Incomplete water absorption

- **Cloaca**

- Common passage for digestive, urinary & reproductive tracts
- Faeces - contain more water, white uric acid crystals

Digestive tract of rabbit

- Mon-gastric hind gut fermenters
- Lips - clefted, prehensile

- Caecum
 - Extensively developed then poultry
 - **Excrete** - soft & hard pellets
 - Caprophagy - eat soft pellets
- Hard pellets - totally digested & dropped
- soft pellets - partially digested & eat again for second phase of microbial digestion